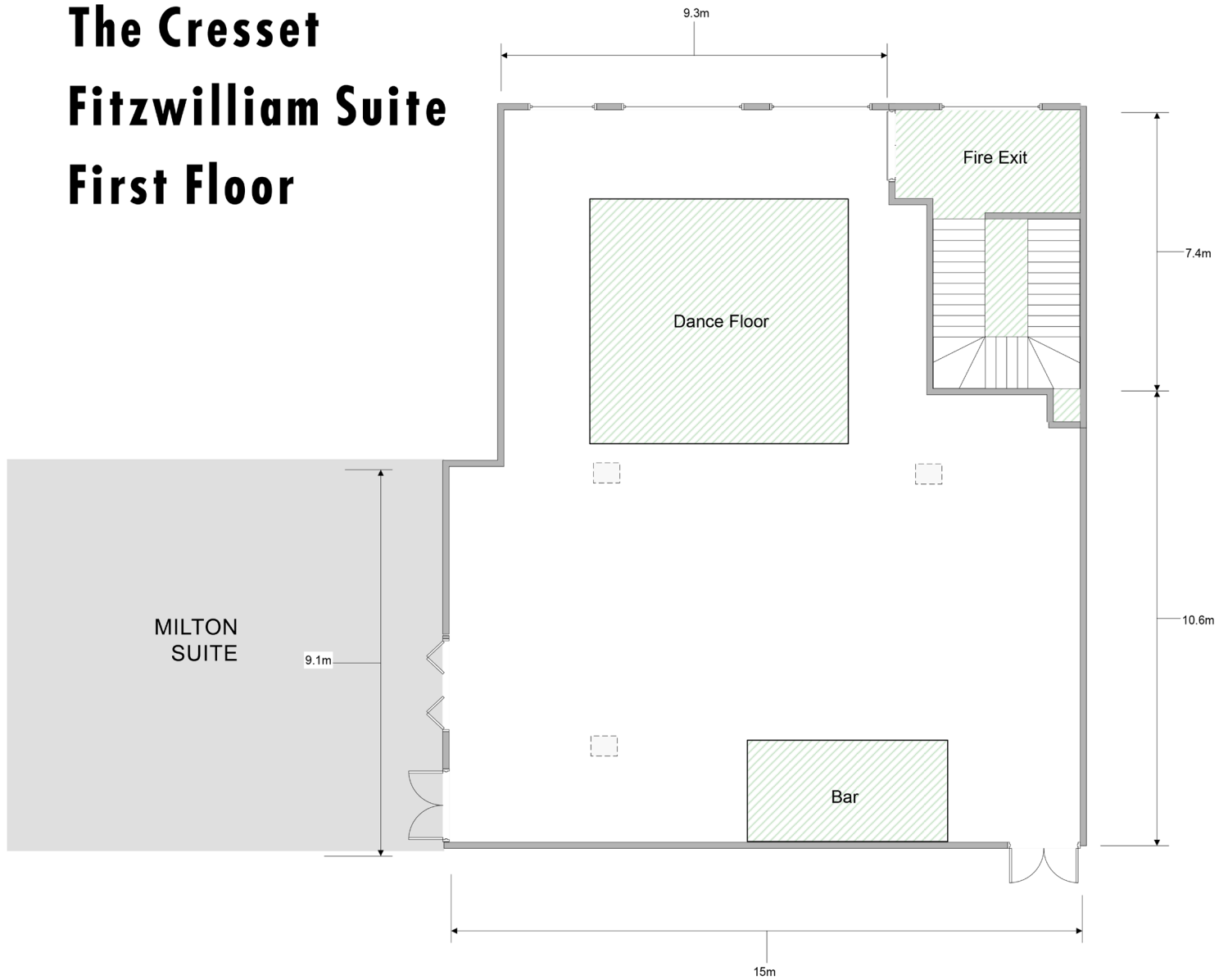


# The Cresset Fitzwilliam Suite First Floor



Room Layout	Capacity	Room Layout	Capacity
Theatre Style	150	Boardroom	30
Classroom 2 per table	40	U-shape with tables	25
Horseshoe Chairs	30	Round tables (full room) 8 per table	136
Round tables (with dancefloor) 8 per table	80	Cabaret Rounds 6 per table	90
Casual Seating	120		

- Disabled access
- Natural Daylight
- Air Conditioning
- AV Equipment
- Private bar