

# The Cresset

## Conferences & Meeting Rooms



[functions@cresset.co.uk](mailto:functions@cresset.co.uk)



01733 842513 / 842515



[www.cresset.co.uk](http://www.cresset.co.uk)

The Cresset Ltd  
Rightwell  
Bretton  
Peterborough  
PE3 8DX

***Welcome to The Cresset, Peterborough's foremost multi-functional venue and event space.***

Ideally situated west of Peterborough City Centre, close to the A47 and A1, with good local transport links and free parking, The Cresset is the ideal venue for you and your delegates.

From small meeting spaces and training rooms with video conferencing facilities for hybrid meetings, to large conferences and corporate events for up to 800 delegates, The Cresset offers exceptional service, bespoke catering options and top-notch AV support from our in-house theatre & technical team.

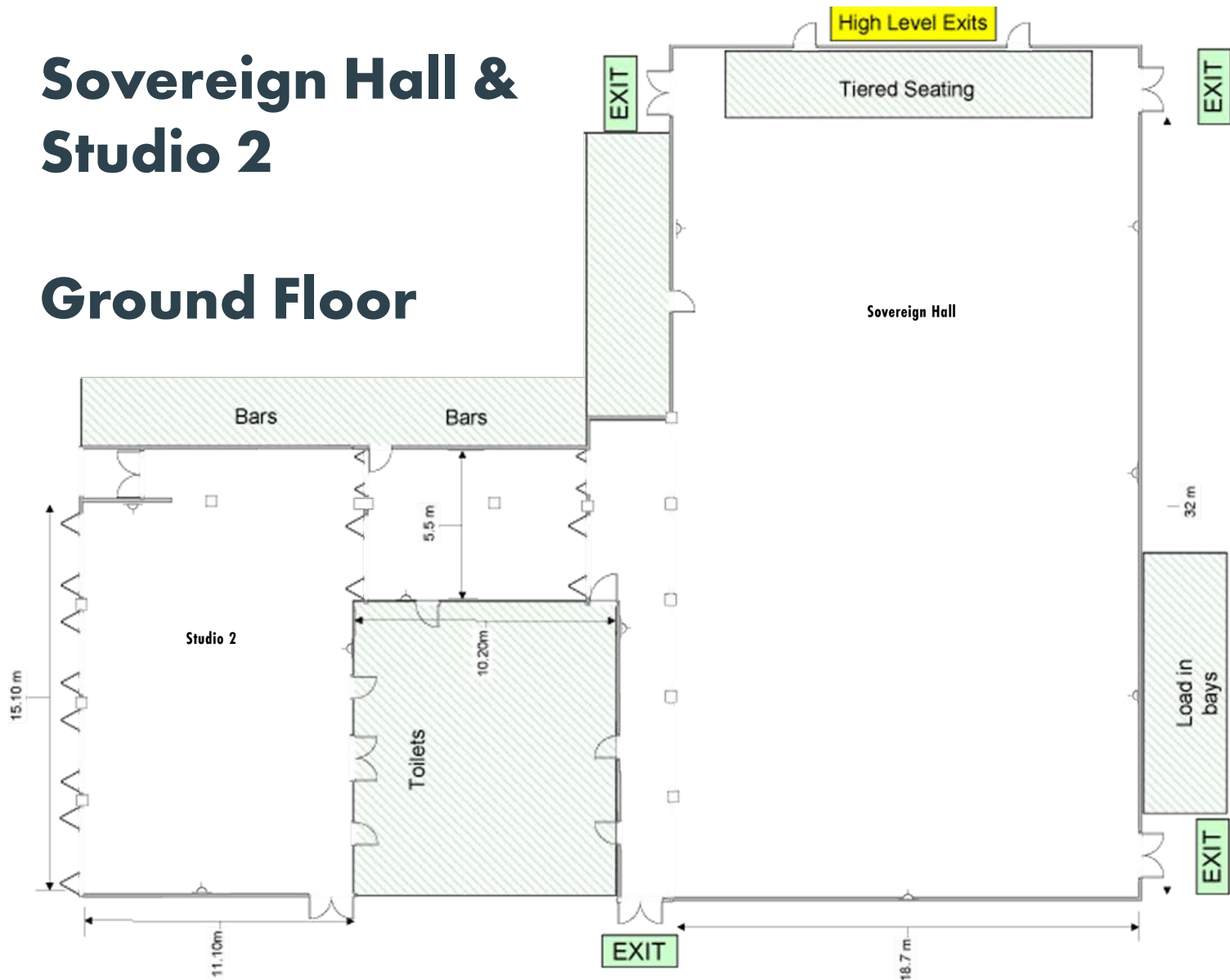
For a bespoke quote or to view the facilities, contact the events team today.

[functions@cresset.co.uk](mailto:functions@cresset.co.uk)



# Sovereign Hall & Studio 2

## Ground Floor



### The Sovereign Hall - £2,000

With a capacity of 800 delegates set Theatre style, this fully equipped theatre is ideal for large conferences with the facilities to accommodate professional staging, lighting, and sound.

The package includes:

- All day hire
- Air conditioning
- Hire of Studio 2 foyer / registration area
- Ground floor, level access
- Free all-day parking
- Room set to your plan including staging and seating
- Duty support technician for set up
- Unlimited supply of chilled water
- A dedicated host to meet and greet all delegates on arrival
- Dedicated Event Manager and catering staff
- Complimentary Wi-Fi

Room Capacity by layout	Sovereign Hall	Studio 2
Theatre Style	850	120
Standing Concert	1000	n/a
Round Tables (full hall)	400	120
Round Tables (with stage & dancefloor)	300	100
Long Tables (full hall)	600	150
Long Tables (with stage & dancefloor)	400	100

# Fitzwilliam Suite

## First Floor



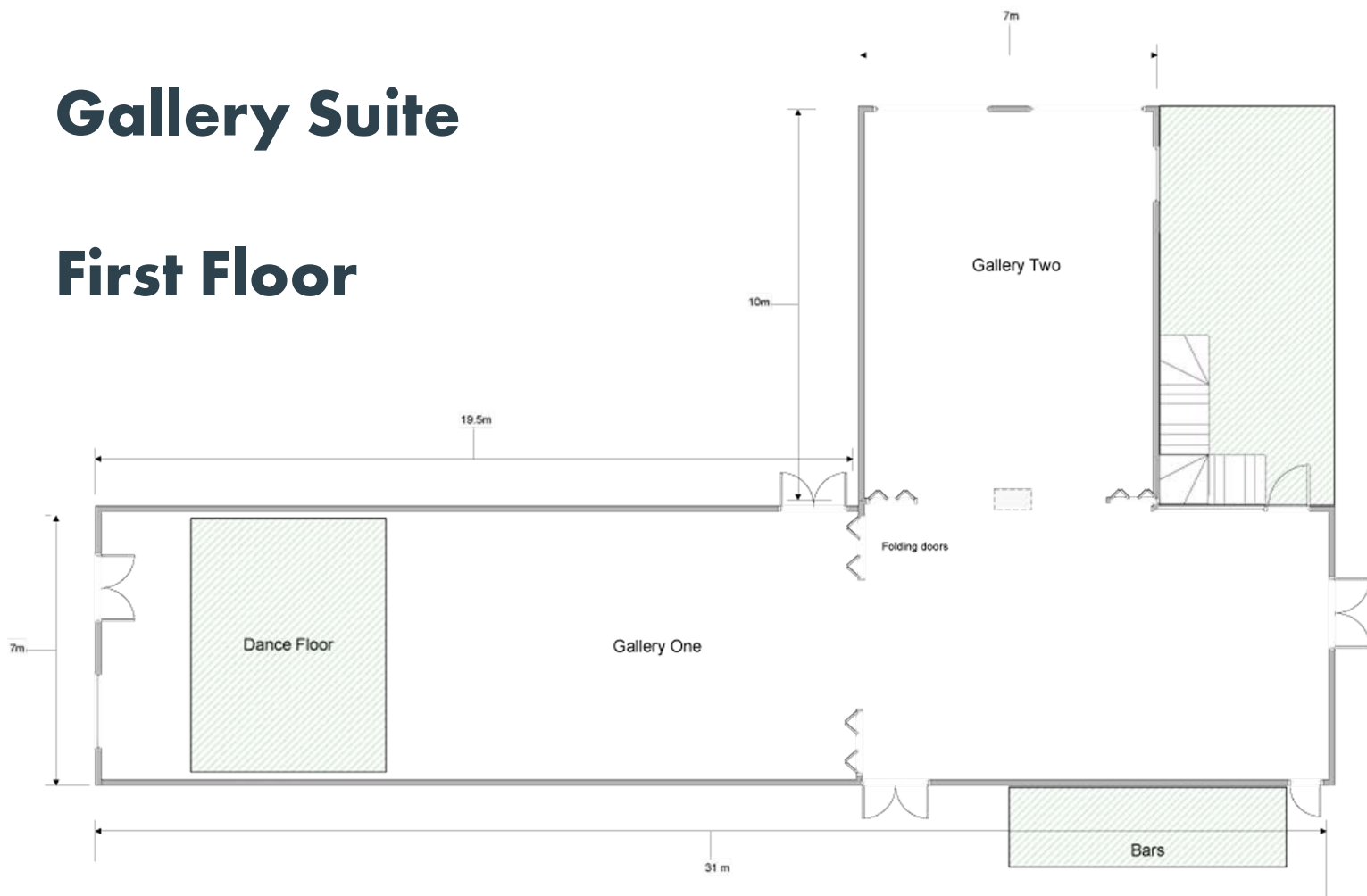
Room Layout	Capacity
Theatre Style	150
Classroom 2 per table	40
Horseshoe Chairs	30
Casual Seating	120
Boardroom	30
U-shape with tables	25
Round tables of 8	136
Cabaret tables of 6	90

### The Fitzwilliam Suite - Full Day £280 / Half Day £200

- All day hire
- Air conditioning
- Free all-day parking
- Room set to your plan
- Duty support technician for set up
- Unlimited supply of chilled water
- Stationery bundle
- Lift access to first floor for delegates and equipment
- Dedicated Event Manager and catering staff
- Complimentary Wi-Fi

# Gallery Suite

## First Floor



**The Gallery Suite - Full Day £300 / Half Day £250**

**Gallery 1 only - Full Day £220 / Half Day £170**

**Gallery 2 only - Full Day £150 / Half Day £100**

Room Capacity by layout	Gallery 1	Gallery 2	Combined Suite
Theatre Style	150	60	180
Boardroom	40	25	40
Classroom 2 per table	40	18	56
U-Shape with tables	30	25	30
Horseshoe Chairs	45	32	45
Round tables (full room) 8 per table	96	48	160
Round tables (with dancefloor) 8 per table	72	48	136
Cabaret style rounds 6 per table	54	30	84
Casual Seating	80	50	150

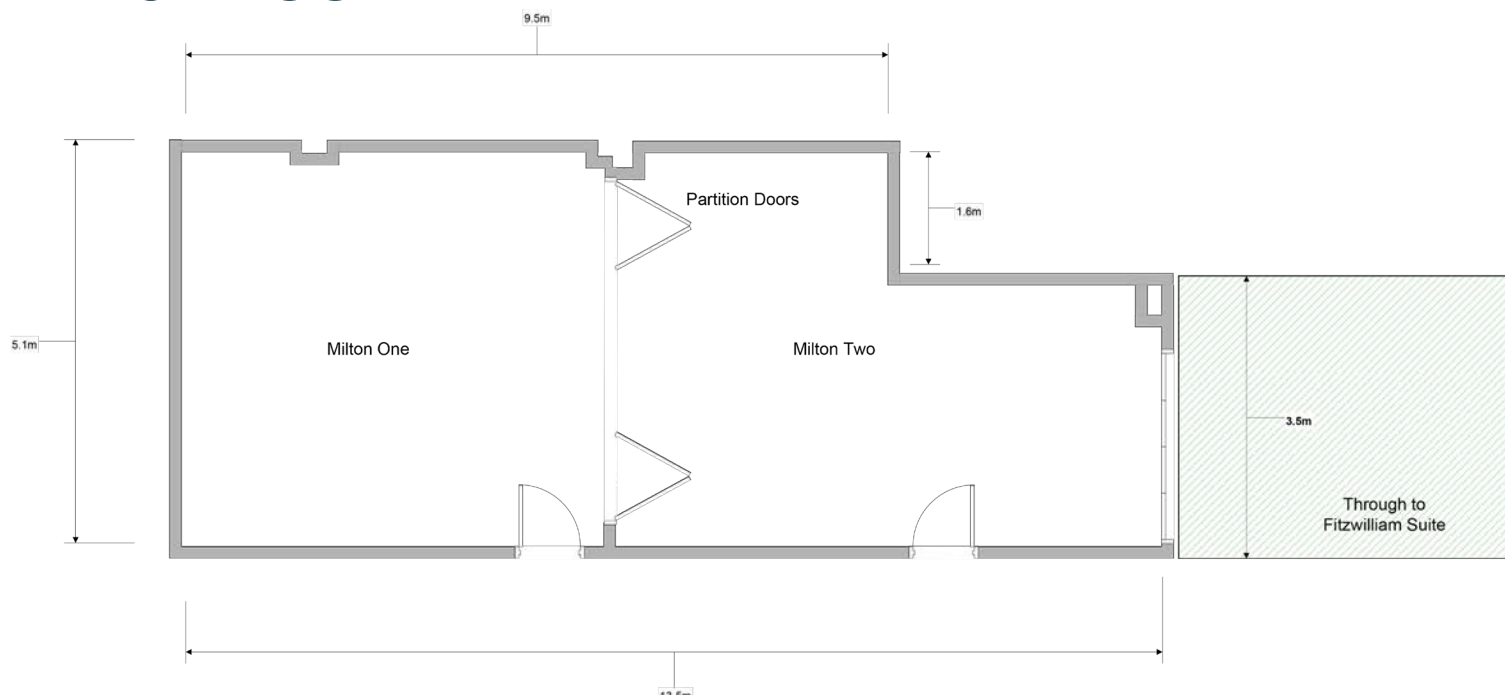
The Gallery Suite comprises three areas: Gallery 1, Gallery 2 and a shared registration / refreshments area. Alternatively, the room can be opened into one large suite.

- All day hire
- Air conditioning
- Free all-day parking
- Room set to your plan
- Duty support technician for set up
- Unlimited supply of chilled water
- Stationery bundle
- Lift access to first floor for delegates and equipment
- Dedicated Event Manager and catering staff
- Complimentary Wi-Fi



# Milton Suite

## First Floor



**The Milton Suite - Full Day £280 / Half Day £200**  
**Milton 1 only - Full Day £100 / Half Day £60**

This small meeting suite has a capacity of 20 people boardroom style, or 30 Theatre style. Alternatively, the suite can be divided with Milton 1 offering a capacity of 16 boardroom. Ideal for meetings, working groups and training sessions.

Room Capacity by layout	Milton 1	Milton 2	Combined Suite
Theatre Style	20	10	50
Boardroom	12	6	20
Classroom 2 per table	8	6	18
U-Shape with tables	10	6	18
Horseshoe Chairs	12	8	22
Cabaret style rounds 6 per table	-	-	24
Casual Seating	15	12	30

- All day hire
- Air conditioning
- Free all-day parking
- Room set to your plan
- Duty support technician for set up
- Unlimited supply of chilled water
- Stationery bundle
- Lift access to first floor for delegates and equipment
- Dedicated Event Manager and catering staff
- Complimentary Wi-Fi

# Equipment & Technical

For pricing, please contact your events manager.

For all events one of our operations or technical teams will be on hand on arrival to ensure any ordered equipment is operational and suitable for your needs. A house technician to manage your AV and support with larger events is available at an additional day rate.

## **Sovereign Hall**

The Sovereign hall main auditorium can host the largest and most professional of conference presentations, with LED or projection screens, full theatre PA system with radio microphones, bespoke stage lighting and technical support. We also welcome external AV suppliers if you have a preferred supplier.

All meeting rooms have complimentary Wi-fi.

In addition, we can provide the following:

- Large TV Screen (fixed in Milton Suite, portable in other spaces)
- Webcam and conference speaker / microphone
- LCD Projector & Screen
- Laptop speakers
- PA System with audio & bluetooth connection
- Radio Mic
- Lapel Mic
- Handheld Mic
- Extension lead

Utilising our in-house equipment and free wi-fi we can easily facilitate hybrid meetings using your preferred video conferencing software.

## Conference Additions

- Flipchart & Pens
- White Board & Pens
- Stationery bundle
- Lectern
- Coat rail

To discuss your individual requirements and get a bespoke quote for your technical package, please contact your event manager.

# Finger Buffet Selection

All menus include your choice of a selection of freshly made sandwiches, wraps or rolls using the fillings we have found to be most popular with our guests. These include Grated Cheddar & Pickle, Home-cooked Ham & Tomato, Tuna Mayonnaise & Cucumber, Chicken Mayonnaise, and Egg & Cress.

If you would like to amend any of these standard items just ask your event manager. Vegan and Gluten-Free menus available on request. All pricing is on a per person basis and inclusive of VAT.

- **A selection of sandwiches and 3 Items of your choice £13.45**
- **A selection of sandwiches and 4 Items of your choice £15.45**
- **A selection of sandwiches and 5 Items of your choice £17.45**

Any additional items are priced at £3.00 per person.

## Served Hot

Southern Fried Chicken Goujons  
Breaded Plaice Goujons with Tartare Sauce  
Mini Cheese & Tomato Pizzas (v)  
BBQ Chicken Wings  
Mac & Cheese Bites (v)  
Assorted Croquettes - puff pastry with savoury Fillings  
Garlic Breaded Mushrooms (v)  
Indian Snack selection - Pakora, Bhaji, Samosa  
Spicy Potato Wedges (v)  
Puff Pastry Sausage Rolls  
Cocktail Sausages  
Cheese & Onion Rolls (v)  
Chips

## Served Cold

Cheddar & Pineapple / Mini Pickled Onions (v)  
Feta Cheese & Cherry Tomato Skewers (v)  
Mini Savoury Eggs  
Pork Pie  
Crisps, Tortillas & Dips (v)  
Traditional Quiche - Including Vegetarian options  
Fresh Crudités and Hummus (v)



# Buffet Lunches

## **Lunch option 1 £16.95**

Cold Meats: Gammon Ham & Roast Turkey  
New Potatoes  
Mixed leaf Salad  
Tomato, Cucumber and Red Onion Salad  
Homemade Chunky Coleslaw  
Pasta Salad with Peppers & Onions  
Continental Rolls

## **Lunch option 2 £16.95**

Homemade Lasagne  
Italian Herb Potatoes  
Mixed Leaf Salad  
Garlic Bread

## **Lunch option 3 £16.95**

Homemade Chicken Curry or Chilli  
Basmati Rice  
Mixed Leaf Salad  
Mango Chutney  
Naan

## **Sandwich Platter £8.50**

Assortment of Freshly Filled Sandwiches  
Chips

**Vegetarian, vegan and gluten free alternatives available on request.**

# Breakfast

## **Continental £6.95**

Danish Pastries  
Croissants with Butter & Jam  
Pain au Chocolate  
A Basket of Fruit

## **Full English £9.95**

Bacon, Lincolnshire Sausage, Scrambled Eggs, Hash Browns, Mushrooms, Baked Beans, Grilled Tomatoes, Toast

## **Breakfast Rolls £5.50**

Soft Rolls with a choice of  
Bacon  
Sausage  
Fried Eggs  
Vegetarian options available

# Refreshments

Single serving Coffee, Tea & Biscuits £2.40

Unlimited Coffee, Tea & Biscuits £5.00

Fruit Juice £1.50

Unlimited chilled water is included in all packages

*We pride ourselves on our flexible approach, and all our catering is done in-house. If you would like to offer your delegates anything which is not listed in these menus then please ask for a tailor made menu quotation.*



**Milton  
Suite**

**Fitzwilliam  
Suite**



**Gallery  
Suite**